

Ventilating Fan Specifications

Model : FV-25AU9T

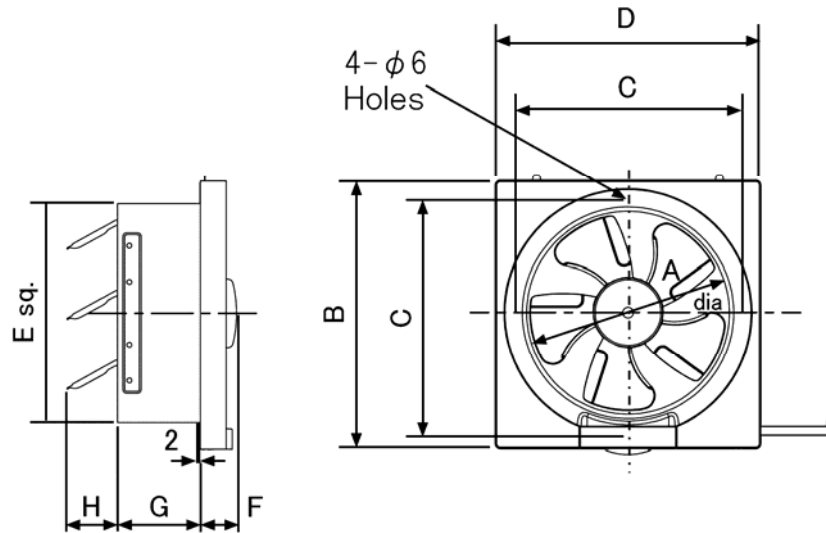
Specifications

			110V 50Hz	110V 60Hz	127V 60Hz
			Exhaust	Exhaust	Exhaust
Air Volume	m ³ /h	±10%	640	740	950
Power Consumption	W	±12%	22.0	23.0	31.0
Ampere	A	±12%	0.22	0.22	0.26
Noise	dB (A)	+3/-7	36.0	37.0	41.0
*Rotation Speed	min ⁻¹		880	940	1145

*Rotation Speed data are reference only.

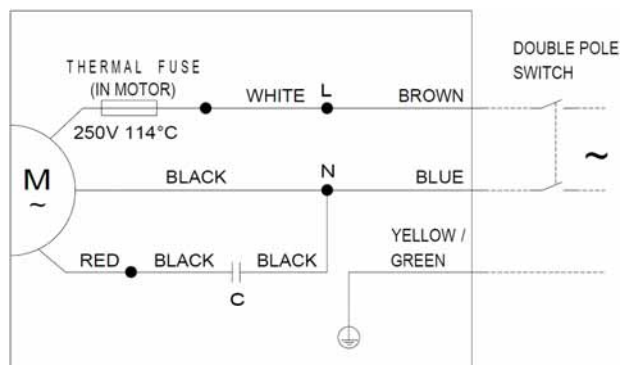
1. Power Rating ----- 110V~ 50Hz / 110-127V~ 60Hz
2. Motor Type ----- Capacitor start and run induction motor
3. Blade Type ----- 250mm dia. propeller fan
4. Ambient Temperature ----- -10 to 40 deg.C
5. Insulation Resistance ----- More than 10meg ohm
6. Electrical Strength ----- 1500V~ 1 minute
7. Net Weight ----- 2.4Kg
8. Insulation Class ----- Class E

Drawing with dimensions (Unit: mm)



Model	A	B	C	D	E	F	G	H
FV-25AU9T	250	356	310	352	290	38	90	63

Circuit diagram



Ventilating Fan Specifications

Model : FV-25AU9T

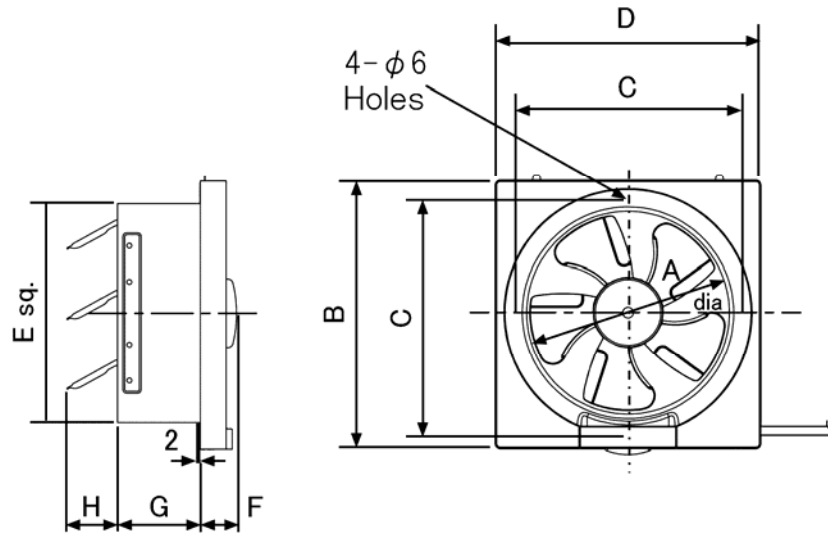
Specifications

			220V 50Hz	230V 50Hz	240V 50Hz	220V 60Hz	230V 60Hz
			Exhaust	Exhaust	Exhaust	Exhaust	Exhaust
Air Volume	m ³ /h	±10%	920	940	960	940	1000
Power Consumption	W	±12%	27.0	29.0	32.0	31.0	35.5
Ampere	A	±12%	0.13	0.14	0.15	0.16	0.16
Noise	dB (A)	+3/-7	39.0	42.0	42.0	39.0	44.0
*Rotation Speed	min ⁻¹		1070	1100	1170	1125	1193

*Rotation Speed data are reference only.

1. Power Rating ----- 220-240V~ 50Hz / 220-230V~ 60Hz
2. Motor Type ----- Capacitor start and run induction motor
3. Blade Type ----- 250mm dia. propeller fan
4. Ambient Temperature ----- -10 to 40 deg.C
5. Insulation Resistance ----- More than 10meg ohm
6. Electrical Strength ----- 1500V~ 1 minute
7. Net Weight ----- 2.4 Kg
8. Insulation Class ----- Class E

Drawing with dimensions (Unit: mm)



Model	A	B	C	D	E	F	G	H
FV-25AU9T	250	356	310	352	290	38	90	63

Circuit diagram

