

Ventilating Fan Specifications

Model : FV-30RG7T

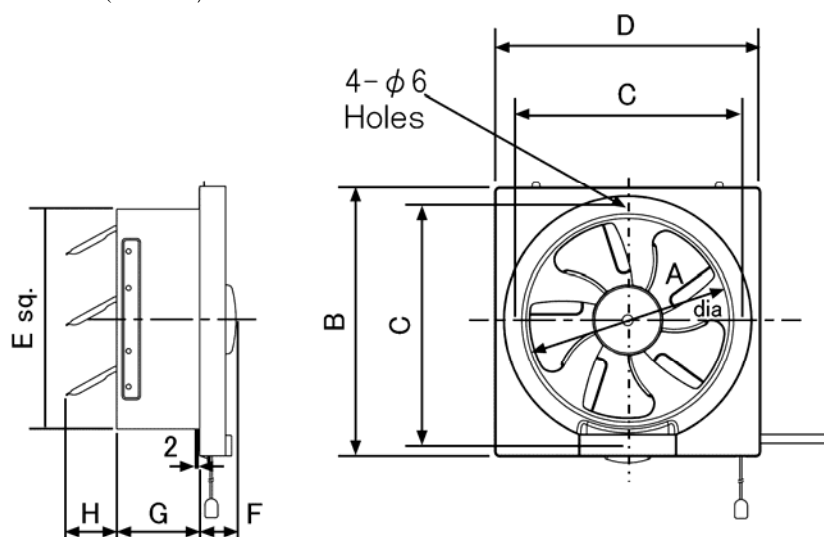
Specifications

			110V 50Hz		110V 60Hz		127V 60Hz	
			Exhaust	Intake	Exhaust	Intake	Exhaust	Intake
Air Volume	m ³ /h	±10%	900	600	970	640	1140	750
Power Consumption	W	±12%	24.0	17.0	26.0	19.0	34.5	25.0
Ampere	A	±12%	0.23	0.16	0.24	0.17	0.28	0.20
Noise	dB (A)	+3/-7	35.0	36.5	36.0	37.0	40.0	42.5
*Rotation Speed	min ⁻¹		750	670	800	680	940	810

*Rotation Speed data are reference only.

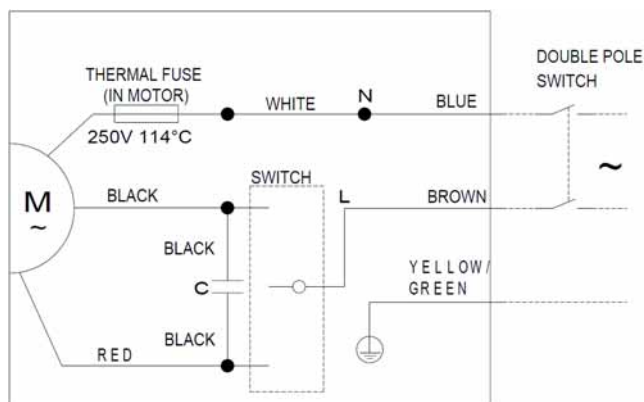
1. Power Rating ----- 110V~ 50Hz / 110-127V~ 60Hz
2. Motor Type ----- Capacitor start and run induction motor
3. Blade Type ----- 300mm dia. propeller fan
4. Ambient Temperature ----- -10 to 40 deg.C
5. Insulation Resistance ----- More than 10meg ohm
6. Electrical Strength ----- 1500V~ 1 minute
7. Net Weight ----- 2.8 Kg
8. Insulation Class ----- Class E

Drawing with dimensions (Unit: mm)



Model	A	B	C	D	E	F	G	H
FV-30RG7T	300	406	360	402	340	38	90	78

Circuit diagram



Ventilating Fan Specifications

Model : FV-30RG7T

Specifications

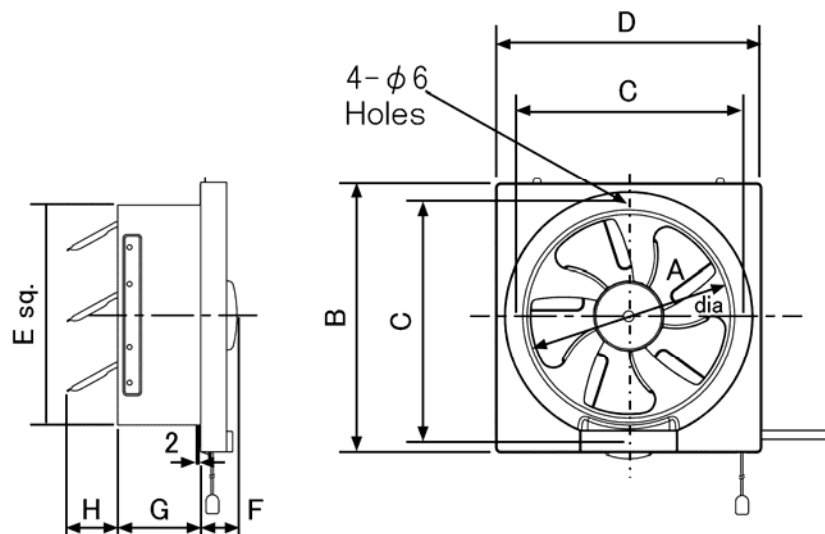
			220V 50Hz		230V 50Hz		240V 50Hz	
			Exhaust	Intake	Exhaust	Intake	Exhaust	Intake
Air Volume	m ³ /h	±10%	1165	700	1050	700	1170	800
Power Consumption	W	±12%	31.0	24.0	35.0	28.0	40.0	30.0
Ampere	A	±12%	0.15	0.12	0.16	0.12	0.17	0.13
Noise	dB (A)	+3/-7	39.0	43.0	42.0	45.0	42.0	46.0
*Rotation Speed	min ⁻¹		885	780	930	840	990	915

			220V 60Hz		230V 60Hz	
			Exhaust	Intake	Exhaust	Intake
Air Volume	m ³ /h	±10%	1000	680	1150	750
Power Consumption	W	±12%	38.0	26.0	40.0	27.0
Ampere	A	±12%	0.19	0.12	0.18	0.13
Noise	dB (A)	+3/-7	38.0	42.0	42.0	45.0
*Rotation Speed	min ⁻¹		900	770	990	820

*Rotation Speed data are reference only.

1. Power Rating ----- 220-240V~ 50Hz / 220-230V~ 60Hz
2. Motor Type ----- Capacitor start and run induction motor
3. Blade Type ----- 300mm dia. propeller fan
4. Ambient Temperature ----- -10 to 40 deg.C
5. Insulation Resistance ----- More than 10meg ohm
6. Electrical Strength ----- 1500V~ 1 minute
7. Net Weight ----- 2.8 Kg
8. Insulation Class ----- Class E

Drawing with dimensions (Unit: mm)



Model	A	B	C	D	E	F	G	H
FV-30RG7T	300	406	360	402	340	38	90	78

Circuit diagram

